

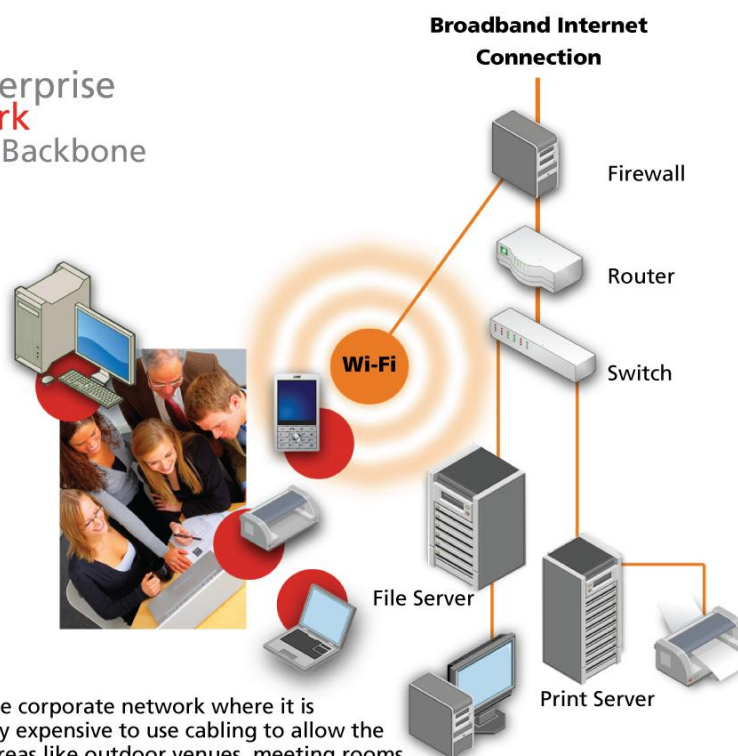
Business Network with Wired Backbone



This is how a business might design its combined Wi-Fi and wired network. Based upon a wired backbone, various Wi-Fi networks hang off the Ethernet backbone and wirelessly connect a wide range of desktop computers, portable computers, peripherals and storage devices. Wi-Fi is used to extend the corporate network where it is impractical or overly expensive to use cabling. But if you already have a wired network, it makes sense to add wireless components to create a combined wireless/wired network. In most cases, businesses use a high capacity wired backbone to provide a common network and connection to the Internet. This backbone can connect various servers, printers and desktop computers throughout the facility.

Businesses, campuses or municipalities can use wireless access points to extend the Wi-Fi network into areas that are difficult to reach with wires, like meeting rooms, outdoor venues or first responder vehicles. Businesses can use Wi-Fi to provide easy Internet and network access for their mobile staff as well as for visitors to their facility. Instead of searching around for an Ethernet connection and cable, they can simply log onto the corporate network using Wi-Fi.

Sample Enterprise
network
with Wired Backbone



Wi-Fi can extend the corporate network where it is impractical or overly expensive to use cabling to allow the network to reach areas like outdoor venues, meeting rooms and first responder vehicles. Businesses also use Wi-Fi to provide easy Internet and network access for their mobile staff as well as for visitors to their facility.